



KCDC 5 year Path works strategy and planning approved by board XXXXXX 2023.

Background

Kingussie, the capital of Badenoch, is a small traditional Highland town on the north bank of the river Spey, bounded by the Insh marshes to the south and the Monadhliath Mountains to the north. Apart from the Sustrans path to Newtonmore, there is limited dedicated off road walking between settlements in the Strath, although in 2021 The Speyside Way was extended to go through the town, although this incorporates a road section between Kingussie and Ruthven. The main opportunity for local walking is on paths to the north of the town, primarily on the Pitmain Estate land. The relationship between the estate and KCDC is mutually supportive. Many paths are designated Core paths. KCDC has the support of the local landowners in maintaining the current path network.

The vision for our path network

The vision for Kingussie is that KCDC creates an exemplar town path network, within the context of the Cairngorms National Park, based primarily on existing and core paths. Crucially this path network will begin from the very heart of the town, where people live or have a base for a visit. This network is one where people can enjoy all the health and well-being benefits associated with walking in the countryside. As far as possible this network should allow inclusive access where practical and reasonable, particularly closer to the town paths and should be of all abilities standards. This path network will meet the requirements of Scottish access legislation with improvements being designed for multi use. The standards of path build and maintenance will make surfaces attractive to walk and ride on and be based on Paths for All & UPAG construction guidelines with highest standards of reinstatement. Paths will be signed and promoted through various media, providing up to date and accurate information to encourage use by locals and visitors. Voluntary path works will be coordinated by KCDC with an ethos of inclusivity, in which a wide range of abilities and ages can be catered for. All contributions commensurate with ability will be welcomed and acknowledged.

Aim of the paths sub group of KCDC

The aim of the paths group is, as far as possible on a voluntary basis, to plan, coordinate and carry out the maintenance and improvements to the current paths network, including the potential for additional links, particularly from the heart of the town.

Historical context and progress to date

Constituted in 2006 KCDC has promoted a local path network and through work of contractors and volunteers has, along with various partners, replaced, improved and maintained the infrastructure and paths on various sites. These works include:-

- Erection of signposting on 6 community paths and production of maps with CNPA
- Creag Bheag Path - contracts (2011/13) with COAT to build sections of Creag Bheag Path north & south. Subsequently, KCDC volunteers have rebuilt a lower section of 280m of south & 2 sections at St Vincents Place (2021/2).



- Golf Course Circular – contract (2011) with COAT to build section above golf course, resurfaced sections by caravan site with Community Service, steps & handrail by River Gynack (2019), replaced clubhouse bridge, which was destroyed in 2014 floods (2018)
- Tom Baraidh – resurfacing and footbridges with Community Service (2011), 400m paths surfaced by KCDC volunteers (2021)
- Gynack (Mill) Trail- path network built, link to Tom Baraidh (2022)
- Jubilee Walk – new section built by local contractor N Reid (2019)
- Curlew Path – Strathlynn bridge replaced (2011), realignment @ west end of Loch Gynack by Pitmain estate (2015), Allt Gortan Bridge replaced & sections resurfaced (2019)

Partnership funding has been obtained for path works from: KCDC Hydro fund, Cairngorm Trust, Paths for All, Co-op Communities Fund, Tesco Bags for Life, People's Postcode, and Lottery Communities Fund.

Activity, coordination and support

The work is undertaken on a voluntary basis through the governance of KCDC. This includes the following;

- Carrying out a paths audit and prioritising path works on an annual basis
- Monitoring paths and reacting to specific problems as quickly as practically possible (example fallen tree)
- Management and coordination of volunteer Path works
- Training of volunteers
- Procurement of funds for path works
- Preparation of applications and reports for funders as required ensuring works fit into regional and national strategies. For example: Green Health, active travel, access legislation etc.)
- Oversight of external contracts
- Liaison with landowners (primarily Pitmain Estate) on path works and joint projects
- Maintenance of path building tools and resources
- Provision of information and promotion of paths through: Signage, brochure, trail head boards, website and social media
- Health and safety of activity

Audits

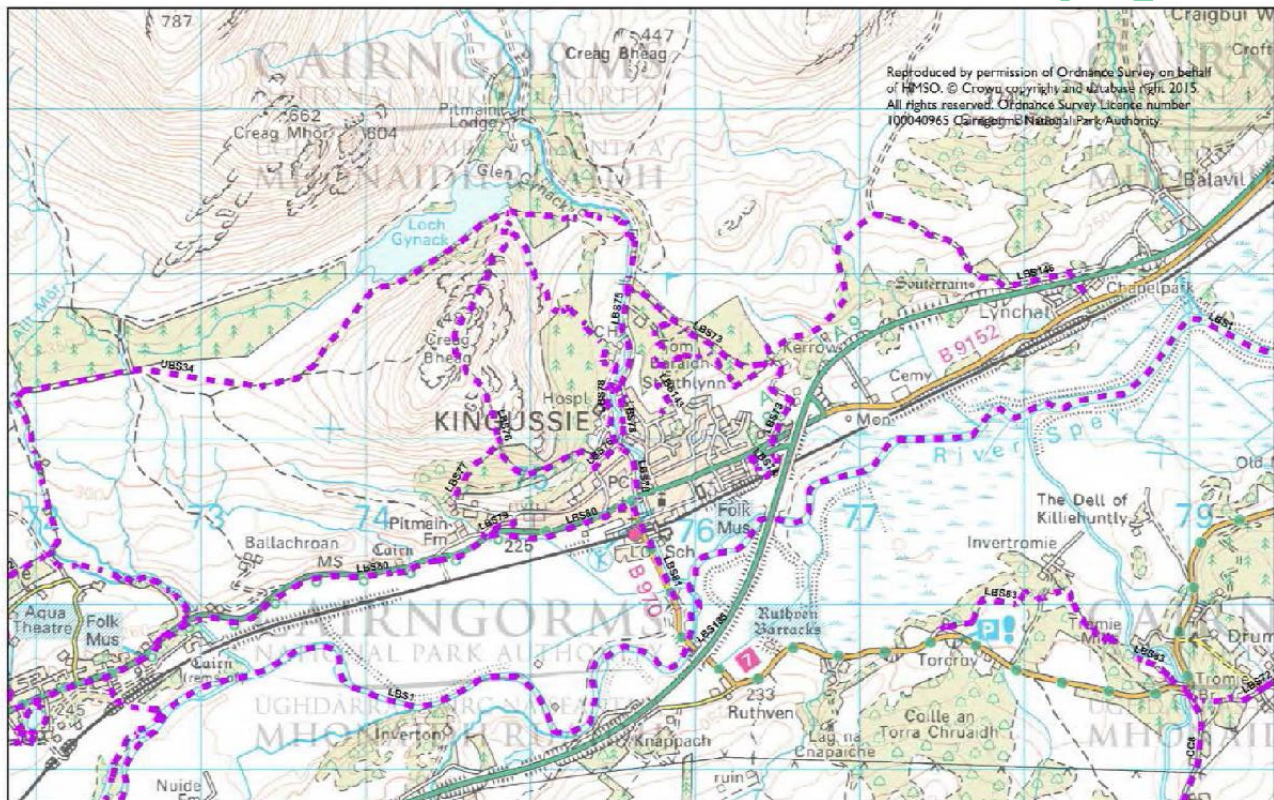
Path audit (annex A)

Signage audit (annex B) - In Preparation

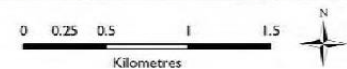
Path Audit (winter 2023 to be reviewed annually)

The list below is of most paths in the Kingussie area in regular use by the general public. Paths listed include the following (there is considerable crossover):-

- 14 Kingussie Core paths identified by CNPA on Map 17 of <https://cairngorms.co.uk/wp-content/uploads/2015/06/CorePathsPlanFinal150727.pdf>
- 6 paths listed on the KCDC Cairngorms Paths - Kingussie Paths Leaflet
- Many of the alternative routes and regularly used offshoots associated with the above paths
- Potential paths identified to be developed in the next five years



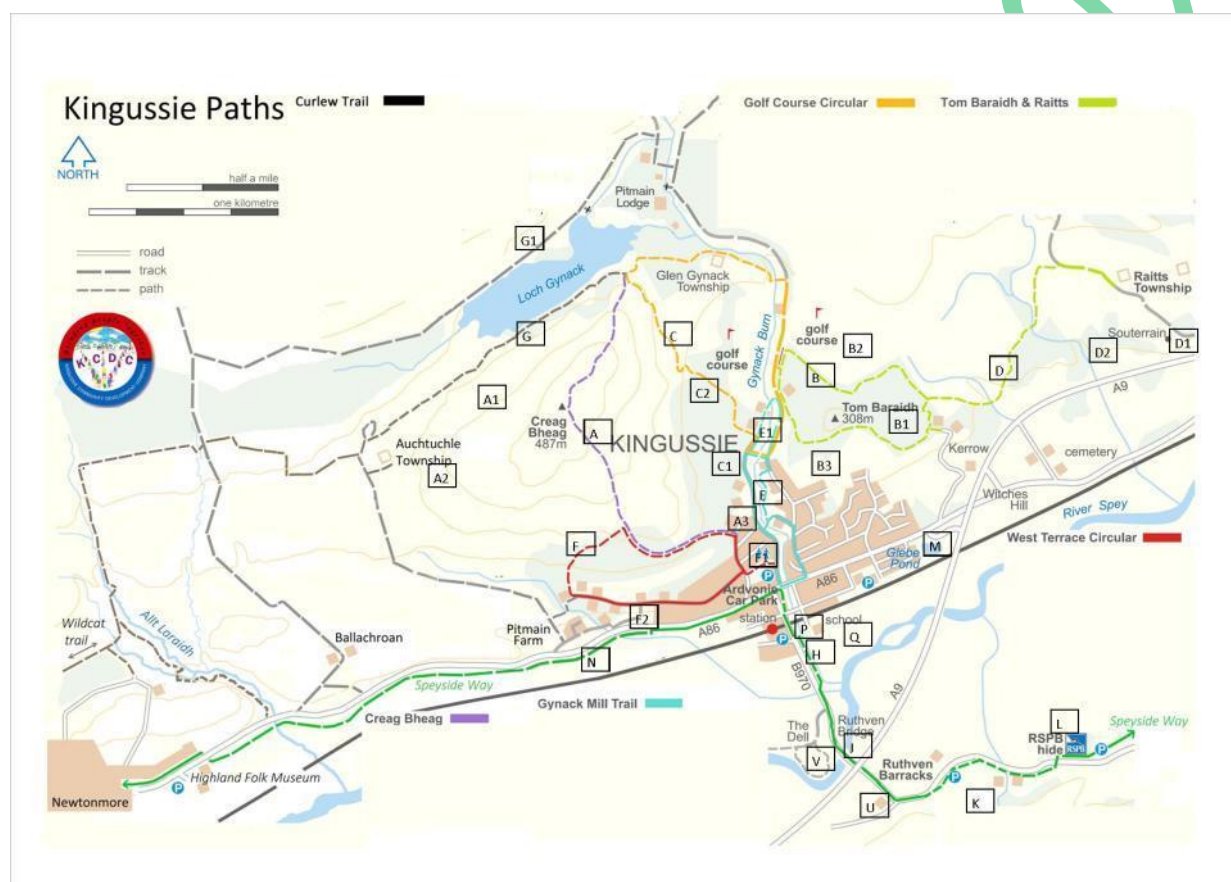
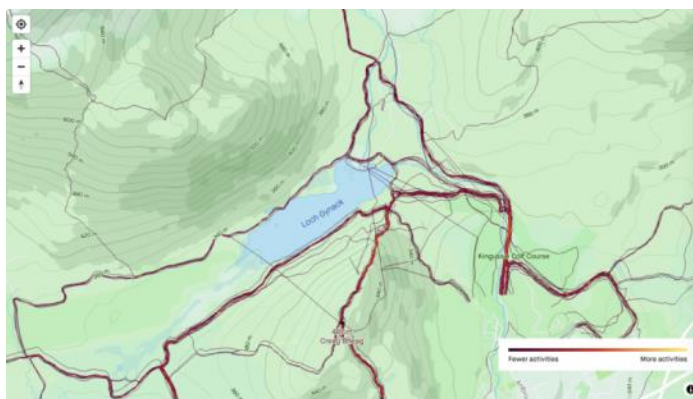
**Core Paths Plan Map 17
Kingussie**



KCDC volunteers work on many of the paths with the agreement of the land owners, but other paths (eg those on the RSPB Insh Marshes reserve) maintained by other organisations, are included to try and give a more complete picture of paths in the area and context to paths maintained by KCDC.

Fuller details (such as previous work, land ownership, location, dimensions etc.) are in the accompanying spreadsheet but a summary of proposed work by KCDC to any path informs its action plan for the next 5 years. General maintenance and minor localised repairs are not included.

Path usage is determined by discussion with regular walkers, and heat maps such as Strava on right.



Creag Bheag map=A

Brief description	Forest track and hill path from Tait's Brae over summit of Creag Bheag to junction above Loch Gynack
Usage (High Low Medium)	H both visitor and local
Work required	a) South of summit & b) summit ridge-major erosion on unbuilt sections between previous work, c) small repairs to north side built path
Priority (1-5 high to low)	a) 3 for lower sections, 2 for higher sections b) 2



	c) 3
Notes	Helicopter lift required for materials to summit area

Alternatives/Offshoots associated with Creag Bheag

map	Description	Usage	Work Required	Priority
A1	Auchtuchle township to summit	L-M	Being monitored for spreading from Aug 2022	
A2	Woodland block on Curlew trail to summit	L	Being monitored for spreading from Aug 2022	4
A3	St Vincents Place to Gynack Road	L		

Tom Baraidh Circuit map=B

Brief description	Circular woodland path around internal perimeter of TB with several entry points
Usage (High Low Medium)	H both visitor & local, in particular dog walkers
Work required	a) surfacing in gaps between previous work on north side b) surfacing on some entry points c) surfacing all remaining circular path
Priority (1-5 high to low)	a)3 b)2 c)4
Notes	Extensive windblow winter 21/22

Alternatives/Offshoots associated with Tom Baraidh Circuit

map	Description	Usage	Work Required	Priority/notes
B1	Radial paths within TB circuit	L	none	5
B2	Moorland paths to north	M	none	5
B3	Acres Road to TB	M	? surfacing	4

Golf Course Circular map=C

Brief description	Low level circuit of road & path from Ardvonie car park via caravan site to Loch Gynack junction around golf course and return by Ardbroilach Road
Usage (High Low Medium)	H
Work required	a) segregated path alongside Gynack Road from Duke of Gordon Hotel to Caravan park



	b) eroded sections between bench above golf course to Loch Gynack junction - surfacing c) eroded sections between top of golf course and Pitmain road- surfacing d) segregated path between bridge and twin pillarsl
Priority (1-5 high to low)	a)1 b)2 c)3 d)5
Notes	Extensive windblow winter 21/22 behind caravan park

Alternatives/Offshoots associated with Golf Course Circular

map	Description	Usage	Work Required	Priority
C1	Paths in Sanatorium woodland from caravan site to top of Taits Brae	M/L	light touch drainage and surfacing with locally gained material	4
C2	Crags access from stile	L	light touch drainage and surfacing with locally gained material	4

Raitts & Lynchat map=D

Brief description	From Tom Baraidh woodland through fields , moorland and juniper to archaeological features (derelict township)
Usage (High Low Medium)	M
Work required	a) definition & surfacing on various sections b) replacement of bridge 410m in form start c) replacement of stepping stones on Allt Cealgach 857m d) rerouting/boardwalk/? of wet area passed gate at 1241m
Priority (1-5 high to low)	a) 3 b) 2 c) 2 d) 2
Notes	

Alternatives/Offshoots associated with Raitts & Lynchat

map	Description	Usage	Work Required	Priority/notes
D1	Township to Souterrain and carpark	L		
D2	Return path to Kingussie	N/A	Feasibility study of potential routes and discussion with landowners	



Gynack Woodland (Mill) Trail map=E

Brief description	Hazel woodland path by river Gynack with several entry points onto Ardbroilach and Gynack roads and 2 bridges
Usage (High Low Medium)	H
Work required	Improvement of steep section below tennis courts
Priority (1-5 high to low)	2
Notes	

Alternatives/Offshoots associated with Gynack Woodland (Mill) Trail

map	Description	Usage	Work Required	Priority
E1	Path adjacent to Ardbroilach Road	M	Built 2022 to be reviewed once settled in	3

West Terrace Circular map=F

Brief description	From Ardvonie car park via West Terrace up the side of Sanatorium Woodland to join Creag Bheag path returning by woodland track to Tait's Brae, on quiet road without pavements, waymarked path and forest track
Usage (High Low Medium)	M
Work required	light touch drainage, definition and surfacing on open hill section to northwest of Sanatorium Woodland
Priority (1-5 high to low)	2
Notes	

Alternatives/Offshoots associated with West Terrace Circular

map	Description	Usage	Work Required	Priority
F1	Desire line from Ardvonie toilets to top of steps	H	Improved 2022 to be reassessed following winter use	2
F2	West Terrace to Newtonmore road	L	definition and drainage	3



Loch Gynack Path (Curlew Trail) map=G

Brief description	Path from four ways junction of golf course circular & Creag Bheag path above Loch Gynack to Newtonmore. Mixture of built paths and estate tracks.
Usage (High Low Medium)	M
Work required	Monitored following ditching and resurfacing work in 2022 in section by Loch Gynack
Priority (1-5 high to low)	3
Notes	

Alternatives/Offshoots associated with Loch Gynack Path (Curlew Trail)

map	Description	Usage	Work Required	Priority
G1	Track to north of Loch Gynack	L	Estate managed track	

Other Paths

map	Path	Description	Usage	Work Required	Priority
H	Jubilee Way	Built path from school towards Dell	H	none	5
J	End of JW to Ruthven Barracks	Onroad, Ruthven Rd B970	H	Feasibility study and costed plans required	1
K	Tromie Tramp	Mixture of farm tracks and paths		Feasibility study of potential routes and discussion with landowners	3
L	RSPB Insh Marshes reserve		H	Maintained by RSPB, Speyside Way section by CNPA	N/A
M	Glebe Ponds	Circular board walk and path around pond	M/L	Feasibility Study by Kingussie Community Council	N/A
N	Kingussie to Newtonmore Sustrans path		H	Maintained by BEAR Scotland	N/A
P	Spey Access Point				N/A
Q	Spey Meadows	all ability path	L	Development by J Macpherson & R Ormiston	N/A
U	Nuide Farm Ruthven connection		N/A	Feasibility study of potential routes and discussion with landowners	4
V	The Dell/ Dellmore	Path loop popular with dog walkers		Path development by Transport Scotland as mitigation for A9 dualling.	N/A



5 Year Action Plan for KCDC work on paths

High Priority (1 & 2)

Path	Work	Materials	Action	Cost	Problems
Creag Bheag Summit ridge & south side upper section	20m of pitching and 100m of laid path	Materials not available locally			Requires helicopter delivery of material
Golf Course Circular-alongside Gynack Road	1000m of segregated path		Feasibility/Cost study required		
Golf Course Circular-between Golf Course and new path above Loch Gynack	200m of surfacing	Mineral dust	Work started December 2022		
Raitts path	Bridge replacement, stepping stone replacement, light touch alignment, 50m section at 1241m requires boardwalk or realignment		Requires discussion with Balavil estate		



Medium Priority (3 & 4)

Path	Work	Materials	Action		
Creag Bheag north side	5m of pitching required in addition to previous build	Stone may be available locally			
Creag Bheag south side lower sections	150 m in-between previous work sites requires building	Stone and base material available locally, 10 ton dust required			
Creag Bheag routes up from west	Currently not much more than sheep trods monitoring to see if spreading	none	Fixed point photography set up Aug 2022 to be redone every 6 months		
Tom Baraidh/Acres road	20m of unsurfaced path				
Golf Course Circular-Golf course to Pitmain Road	150m of surfacing	10 ton type one			
Golf Course Circular – Sanatorium woodland	1000m light touch drainage and locally gained surfacing	none			Currently inaccessible due to windblow
Golf Course Circular-climbing crags access path	10m stone path destroyed in storms	Reuse existing stone			
Raitts path	New return route to create circular path to Kingussie and improve link with Lynchat		Feasibility/Cost study required		
West Terrace open hill section	500m drainage, light touch surfacing	5 ton dust			
West Terrace/Newtonmore Road	250m				
Curlew path into Newtonmore					



Work finalised in 2022

1. Finish 100m section on south side of Creag Bheag below gate (completed April 2022)
2. Loch Gynack/Curlew path (alongside Loch Gynack ditched and resurfaced)
3. Ardbroilach Road segregated path & desire line up from hydro Bridge (completed Aug 2022)
4. Tom Baraidh entry point from Ardbroilach Road (completed Aug 22)
5. Creag Bheag West side - set up photo monitoring (set up Aug 22)
6. West Terrace above Ardvonie Park (completed Sept 22) Finish 100m section on southside of Creag Bheag below gate (completed April 2022)
7. Loch Gynack/Curlew path (alongside Loch Gynack ditched and resurfaced)
8. Ardbroilach Road segregated path & desire line up from hydro Bridge (completed Aug 2022)
9. Tom Baraidh entry point from Ardbroilach Road (completed Aug 22)
10. Creag Bheag West side - set up photo monitoring (set up Aug 22)
11. West Terrace above Ardvonie Park (completed Sept 22)

In planning

- Permissions gained for Creag Bheag summit work



Action Plan

Year	Path work with KCDC volunteers	In planning
1- 2023	<ol style="list-style-type: none"> 1. Golf Course Circular- between Golf Course and new path above Loch Gynack (in progress) 2. Gynack woodland, improvement of steep section below tennis courts West Terrace open hill sections 3. Creag Bheag summit(summer dependent on funding) 4. Raitts Path 5. West Terrace/Newtonmore Road 	<ul style="list-style-type: none"> • Jubilee Way to Ruthven (planning & funding) • Golf Course Circular segregated path alongside Gynack Road (planning & funding) • Source funding for material & transport for Creag Bheag summit • Sanatorium path system post clearing (Liaise with Pitmain)
2- 2024	<ol style="list-style-type: none"> 1. Creag Bheag south side lower sections 2. Tom Baraidh south of circular (post felling) 3. Golf Club caravan site path 	<ul style="list-style-type: none"> • Golf club caravan site path • Access around hydro scheme • Removing redundant fencing (in agreement with Pitmain)Lynchat return path options • Nuide Farm Ruthven connection options
3- 2025	<ol style="list-style-type: none"> 1. Golf Course Circular- climbing crags 2. Tom Baraidh /Acres Road 4. Sections of Gynack road volunteer built 	<ul style="list-style-type: none"> • Tromie Tramp options
4- 2026	<ol style="list-style-type: none"> 1. Lynat return paths 2. Nuide farm/ Tromie Tramp 	
5-2027	<ol style="list-style-type: none"> 1. Tromie Tramp 	