



### KCDC COMMUNITY HYDRO GRANTS

It is now just over three years since the hydro scheme was commissioned and began to generate electricity. Generation has now comfortably surpassed 100,000 kWh, and the associated payment of FITs, as well as quarterly payments from Kingussie Golf Club, have led to the build-up of a healthy fund of over £12000 with which to support local organisations. Following the first award to the gymnastic club a year ago further awards have been made to:

- Kingussie Camanachd Club to assist with upgrades at the Dell, and in particular the erection of a dug-out on the away side
- The Wade Centre for the purchase of arts and craft equipment for older adults in the care system
- Roots and Shoots for assistance with the successful lantern procession held in February
- St Vincent's Therapy Garden to assist with their programme at the allotments encouraging people with a range of disabilities in an outdoor environment
- Badenoch Chorale to assist with background film for a Heritage Festival performance
- The Gynack bridge at the golf club.

The fund is open to applications both for small projects (up to £500) and for major projects (up to £2500). Details for applications are to be found on the KCDC website , [www.kcdc.org.uk](http://www.kcdc.org.uk), or directly to any of the directors from whom application forms can be obtained.

### GYNACK BRIDGE AT GOLF CLUB

An application to the Hydro Fund from the Footpaths Group to assist with the reinstatement of the bridge over the Gynack at the Golf Clubhouse was also successful and means that almost all the funding for this work is now in place. Over the past year, the bridge project has also been

awarded over £6000 from the Peoples' Postcode Trust and is currently one of the recipients of funding through Tesco's Bags for Help scheme, so please ensure that if you shop there you vote for the project in store at Aviemore over March and April.



The site of the bridge on the morning of 11<sup>th</sup> August 2014

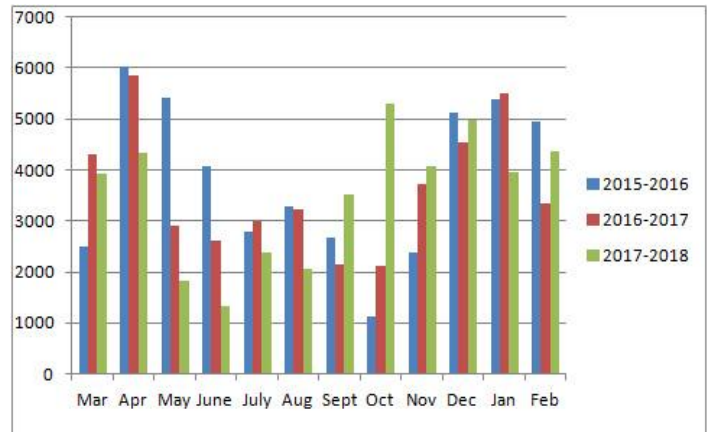


The replacement almost complete.  
February 2018

## KCDC COMMUNITY HYDRO

Last year the performance of the hydro was a bit more variable than in previous years. This graph shows the monthly output in kilowatt-hours.

There were long periods of shutdown during the dry weather in late spring and recently at the end of February 2018 the turbine ceased generation because the inlet screen was completely frozen



The total generated in the year to 15<sup>th</sup> February, the third year of generation, was 42784 kWh, slightly down on the previous wetter years. The income was £11,400 in FIT and export payments and £1983 from Kingussie Golf Club.

The story of the hydro from its beginnings in 2004 to the present day is being put together in a booklet to be published by KCDC around the end of April 2018.

## PATHS AND COMMUNITY LAND

The Community Woods, along the River Gynack between the Cross Bridge and the Golf Course, continues to be enjoyed by locals and visitors. Work is on going to promote the diversity of the woods, maintaining the paths and the lighting has been improved by the pruning of overhanging branches. The setting of the woods beside the river makes it home to a wide variety of plant, animal and bird life.

In February some 150 local children, their families and friends celebrated the Celtic festival of Imbolc, marking the return of longer days. Carrying the lanterns they had made they followed a giant sun lantern around Kingussie's Community Woods which was a spectacular sight.

Litter picking is a regular task and your on going assistance in taking litter home including filled dog poo bags is greatly appreciated. We also need your continued support in not dumping garden waste in the woods as not only does this detract from the beauty of the woodland but can also introduce garden plants into the wild setting.

There are plans to plant some young native trees in the year ahead which will add to the woodland experience.

## CYCLE FRIENDLY KINGUSSIE

CFK will be organising this year's Bikeathon without the cooperation of a big charity this year. The event will be held on June 24<sup>th</sup>, from 1030 at the Duke of Gordon. Entry is £15 for adults and £5 for children with monies going towards Kingussie High School Parents Association. So please save the date and help to make the new Bikeathon as big a success as has been the case over the past twenty years.



Weekly ride-outs on Tuesdays have been continuing despite the winter weather, with the usual choice of road or mountain-bike route, and the enticement of a welcome coffee and cake at some stage. The group looks forward to increased participation when spring arrives, so get in touch with Bob Kinnaird or Mark Tate, although information is available via regular Facebook updates.



## NEW DIRECTORS AND/OR VOLUNTEERS

KCDC are keen to have new directors and fresh volunteers. If you are interested, please speak to any of the Directors or tick the box on the membership form.

## SUBS AND DONATIONS

Following the AGM at the end of last year, when KCDC subs were once again held at £2 per member, we are looking for members to renew their membership via the form at the end of the newsletter, but also inviting further donations towards the bridge and paths network. Thank you to those who answered the call last year, raising over £1000 including gift aid, so if you would like to assist with the completion of these projects, then please complete the form, and Gift Aid section if appropriate.

Forms and monies can be forwarded a) to any director, b) to Treasurer KCDC, Forestville, West Terrace, or c) handed in to Peter Munro & Co, 15 -17 High Street, Kingussie, the company's official address.

### KCDC MEMBERSHIP FORM 2018

**NAME (S)**

**ADDRESS**

**POSTCODE**

**TEL**

**EMAIL**

**Type of membership** – please delete as appropriate

Ordinary - £2 Associate/non-resident/Junior - £1

Please indicate if you are able to volunteer for any working parties ☐

Donations to KCDC are always welcomed and this year all donations will go towards the Gynack Bridge Reinstatement Project and Kingussie Paths Network

**Gift Aid declaration** – for a single donation

**KINGUSSIE COMMUNITY DEVELOPMENT COMPANY**

Please treat the enclosed gift of £ .....as a Gift Aid donation.

I confirm I have paid or will pay an amount of Income Tax and/or Capital Gains Tax for the current tax year (6 April to 5 April) that is at least equal to the amount of tax that all the charities and Community Amateur Sports Clubs (CASCs) that I donate to will reclaim on my gifts for the current tax year. I understand that other taxes such as VAT and Council Tax do not qualify. I understand the charity will reclaim 25p of tax on every £1 that I have given.

**Donor's details**

Title.....First name or initials.....Surname.....

Full Home address

Postcode

Signature..... Date.....

**Please notify the charity or CASC if you:**

*Want to cancel this declaration. Change your name or home address. No longer pay sufficient tax on your income and/or capital gains.*

*If you pay Income Tax at the higher or additional rate and want to receive the additional tax relief due to you, you must include all your Gift Aid donations on your Self Assessment tax return or ask HM Revenue and Customs to adjust your tax code.*

## Loch Gynack Path

Route to Newtonmore with views of loch and hills, passes old township site.

**Distance:** 5 miles

**Approx Time:** 3 hours to Newtonmore (return by same route or by easier 1 hour return route along cycleway beside A86).

**Start:** Ardvonie Car Park then via Golf Course Circular

**Terrain:** Uneven terrain, can be muddy, moderate gradients, exposed on moorland sections. Ford to cross at Newtonmore end.

## Golf Course Circular

Circular walk through birch woodland with views of Loch Gynack.

**Distance:** 2.5 miles

**Approx Time:** 1¼ hour

**Start:** Ardvonie Car Park.

**Terrain:** Uneven terrain, can be muddy, moderate gradients. BEWARE OF GOLF BALLS, particularly at the northern end.

## Tom Baraidh & Raitts

Way-marked route round mature plantation on informal trail through fields and juniper woodland to old settlement site with views over Badenoch.

**Distance:** 3 miles

**Approx Time:** 2 hours (one way)

**Start:** Ardvonie Car Park.

**Terrain:** Uneven ground, can be wet.



## Creag Bheag

Hill path with spectacular views.

**Distance:** 3 mile circular route.

**Approx Time:** 2½ hours.

**Start:** Ardvonie Car Park

**Terrain:** Rough hill path with steep gradients, can be icy in winter.

## West Terrace Circular

Circular walk through mixed woodland.

**Distance:** 1.7 miles

**Approx Time:** 1 hour

**Start:** Ardvonie Car Park

**Terrain:** Quiet road, moderate gradients with some steps, uneven ground, can be muddy, kissing gate.

## Gynack Mill Trail

Walk through woods on good paths with interpretation panels along the trail. There is a separate leaflet giving more detail about the features of this route.

**Distance:** 1.3 miles

**Approx Time:** 1 hour

**Start:** Ardvonie Car Park

**Terrain:** Good paths and quiet roads but with moderate gradients and some steps.

# Kingussie Paths

